

Unlocking Procedure for K3571 Modem for Windows Users

Before you get started, please make sure you have the following:

1. Your current K3571 modem working correctly in your PC
2. The necessary Unlocking code is available (as provided for your specific modem IMEI number).
3. The executable unlocking tool.

There are 3 steps necessary to unlock the modem:

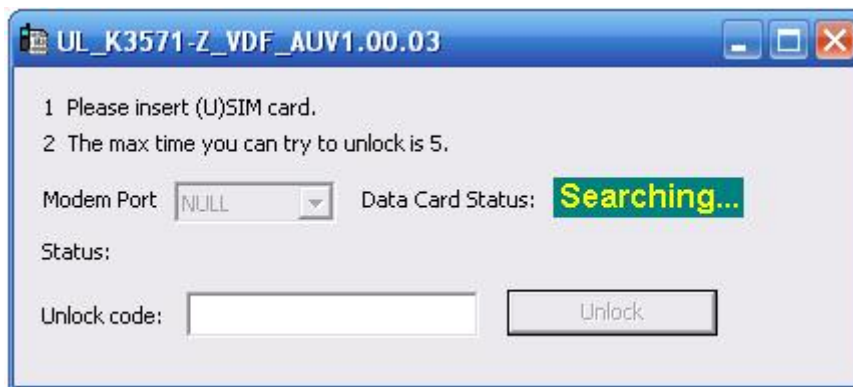
Step1: Run the executable unlocking tool.

Step2: Plug in the K3571 modem into the PC with the Non-Vodafone Sim card inserted into the modem.

Step3: Input the unlocking code.

Please see the following guide:

Step 1: Run the executable unlocking tool. See pic 1



Pic 1

Step 2: Insert the K3571 modem into the PC and then the unlocking tool will detect the modem automatically (See Pic 2). In this Step, make sure you have inserted a Non-Vodafone Sim card in the modem.



Pic 2

Step 3: Input the correct unlocking code. (See Pic 3)



Pic 3

Please note that you only have 5 chances to input the unlocking code correctly and if you input the code incorrectly more than 5 times, the modem will be locked permanently.

Once you have successfully unlocked the modem, a Success message will be displayed as below:



Pic 4